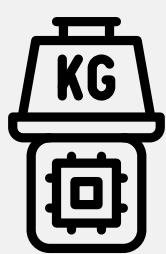
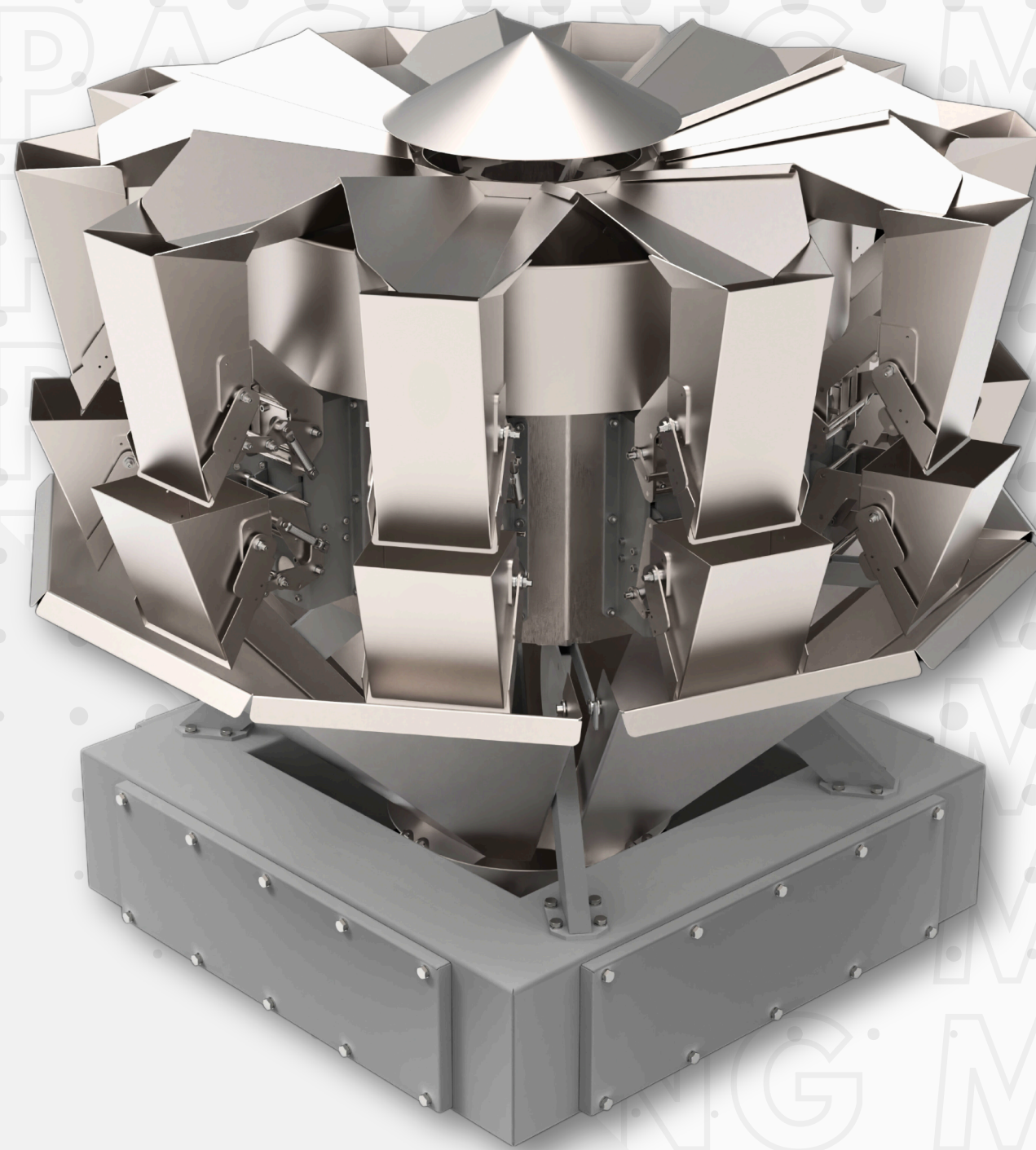
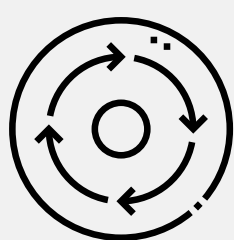


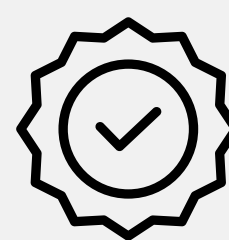
# MULTI HEAD WEIGHER



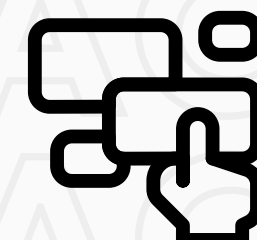
**Accurate  
Weighing**



**Consistent  
Quality**



**International  
Standards**



**Easy to  
Operate**

A Multi-Head Weigher is a high-efficiency system designed to fill pouches at high speeds with precise weight accuracy. It features multiple filling heads, often 10 to 14, that work in parallel, allowing for fast and consistent filling of different products such as powders, liquids, and granules. The machine is equipped with automated functions for weighing, filling, making it suitable for large-scale production.

A Multi-Head Weigher efficiently fills pouches at high speed, ensuring accurate and consistent for various products.

The Multi Head Weigher is ideal for Filling products such as **Potato wafers, Dry Fruits, snacks, coffee, grain porridge, and free flow items.**



## Easy to Operate

Designed with simplicity, our machine features an intuitive smart interface and straightforward controls, ensuring easy operation for all experience levels.

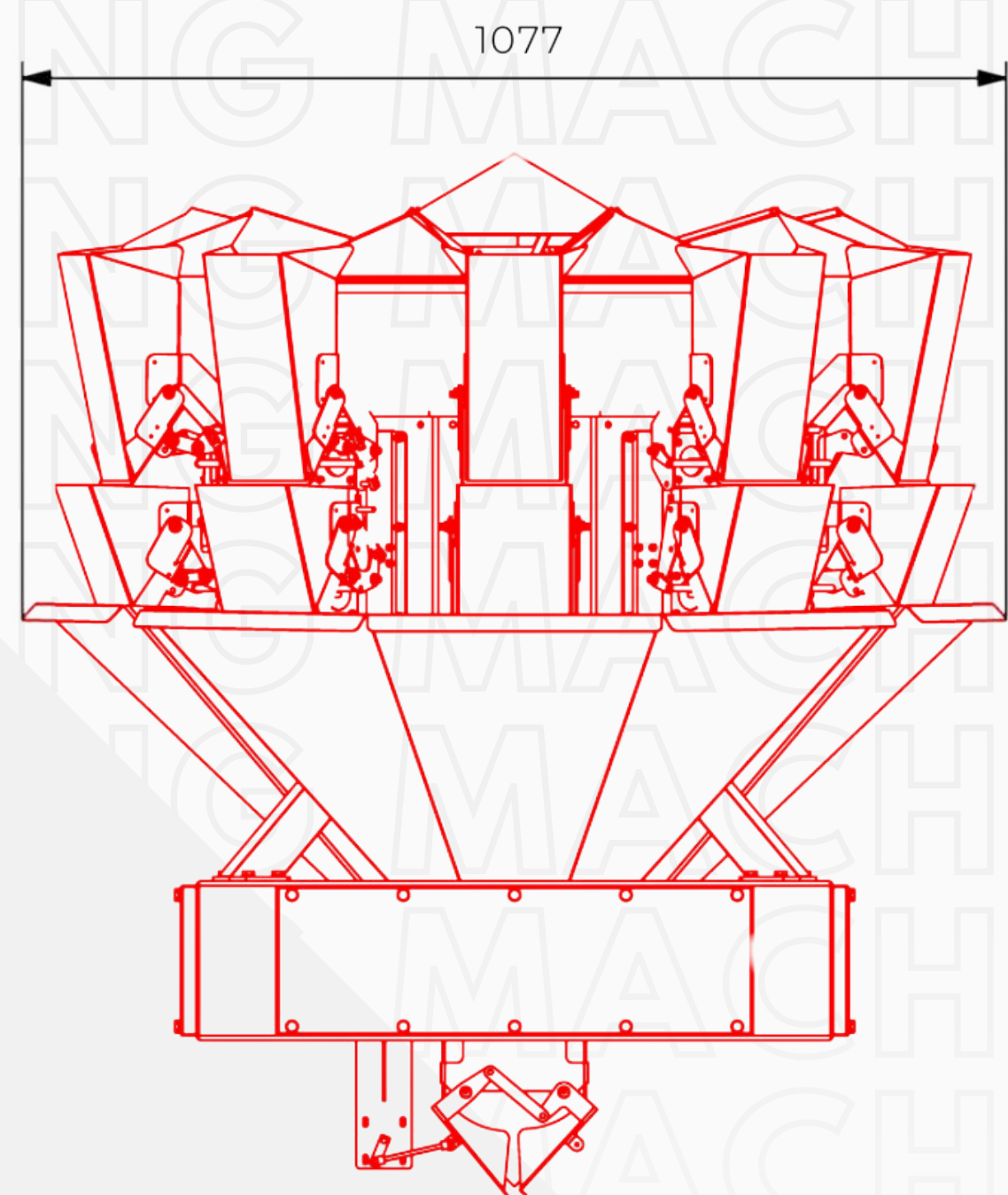
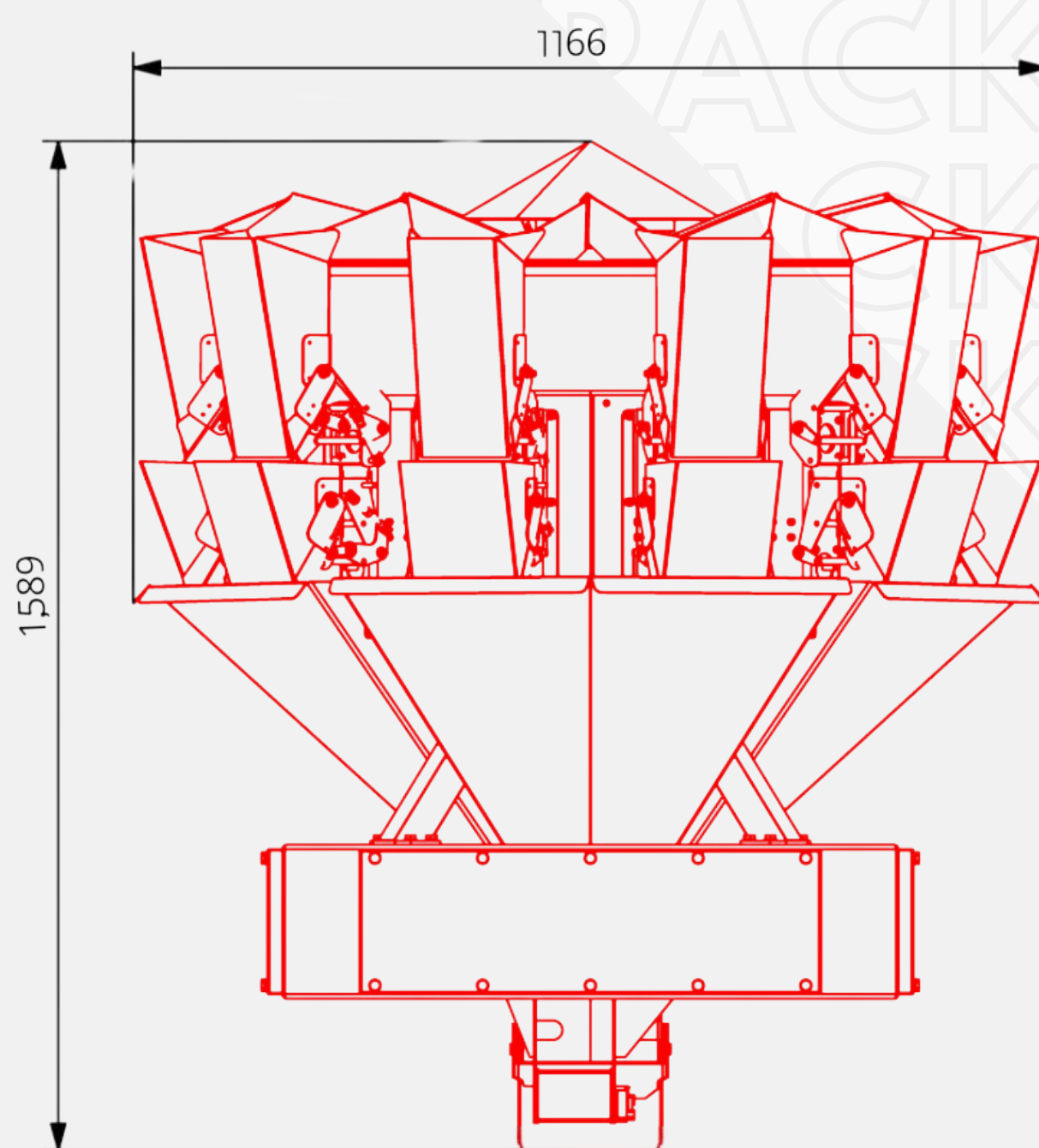
## Easy Maintenance

With a focus on convenience, our machine is engineered for easy maintenance, featuring accessible components and straightforward service procedures.

## Rapid Tech Support

Benefit from our 24\*7 rapid tech support, offering prompt assistance and solutions to minimize downtime and keep your machine running smoothly.

## DIMENSIONS



## TECHNICAL SPECIFICATIONS

Weigher Head	10/14 Heads	Contact Part	Stainless Steel
Filling System	Weighing Scale	Power	220v AC (Single Phase)
Quantity to be Filled	10 Gram To 1500 Gram (Depending On Product)	Operation	Motorized
Machine Weight	~ 150 Kg	Product Compatibility	Chips, Dry fruits
Structure	M.S. Duly Powder Coated	Error In Weight	0.2 - 1.5 Gm

\*The above mentioned values are indicative and can be modified at any time at the discretion of the company.